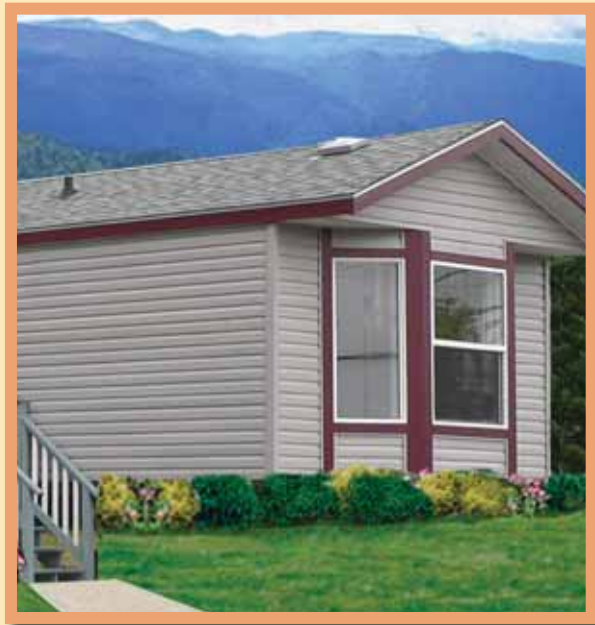


The Lake Country Series 16' Wide Single Section Homes





Standards and Specifications

SRI provides attractive, affordable housing and has been supplying homes to families for over 30 years. The 30,000th home by SRI is due to roll off the production line in 2009.

Exterior

- ◆ Maintenance Free Vinyl Siding and Trim
- ◆ 30 Year Fibreglass Shingle Roof
- ◆ Nominal 4/12 Roof Pitch
- ◆ 6 Panel Steel Insulated Exterior Doors with Storm Doors at both Entries
- ◆ 2x6 Exterior Walls @ 16" O.C. with R-20 Insulation
- ◆ 2x10 Floor Joists
- ◆ Weatherproof Outside G.F.I. Receptacle
- ◆ Exterior Frost Free Tap
- ◆ Black or White Coach Lights at Each Exterior Door
- ◆ White Vinyl Thermopane Windows with Screens and Security Latches
- ◆ Separate Receptacle for Heat Tape
- ◆ Subfloor Screwed and Glued
- ◆ 7/16" Roof Sheathing
- ◆ Perimeter Eave Venting System
- ◆ Box Steel Frame with Detachable Hitch
- ◆ Poly Vapour Barrier

Interior

- ◆ Cathedral Ceiling in Living Room Kitchen & Dining Area
- ◆ Attractive Residential Textured Ceiling
- ◆ 2 Contemporary Carpet Styles: "Repose" (Short Shag) or "Sprite" (Cut-Pile) in Living Room and Master Bedroom
- ◆ Linoleum in all Other Rooms
- ◆ Pewter Light Fixture Package
- ◆ Pewter Hardware
- ◆ Wire Closet Shelving
- ◆ "Traditional" Designer Selected Drapery
- ◆ Draperies in Living Room and Master Bedroom have Rod, End Cap & Rings
- ◆ Venetian Blinds Throughout
- ◆ Wire Shelf over Washer/Dryer Area

Bathroom

- ◆ One Piece Tub and Shower with Brushed Nickel Single Lever Faucet
- ◆ Dual Lever Vanity Faucets
- ◆ Pewter 3 Lite Fixture over Vanity
- ◆ Shower Rods and Shower Curtain Liners
- ◆ 6" x 12" Tile Backsplash
- ◆ Exhaust Fan in Each Bathroom
- ◆ G.F.I. Protected Receptacle
- ◆ Privacy Locks on All Bathroom Doors

Kitchen

- ◆ 18 cu. ft. Frost Free 2-Door Refrigerator
- ◆ 30" Electric Range with Clock and Light
- ◆ 2-Speed Rangehood Fan with Light, Vented to the Exterior
- ◆ Modular MDF Cabinets with Raised Panel Doors and Designer Hardware
- ◆ Brushed Nickel Single Lever Faucet with Vegetable Sprayer
- ◆ Double Stainless Steel Sink
- ◆ Deep Cabinet over Refrigerator
- ◆ Drawer Guides on all Drawers
- ◆ 6" x 12" Tile Backsplash

Utilities

- ◆ Natural Gas Furnace Electronic Ignition
- ◆ Air Conditioner-Ready Furnace
- ◆ 50 Gallon (U.S.) Electric Water Heater
- ◆ Life Saving Smoke Detector(s)
- ◆ Plumbed and Wired for Washer and Dryer
- ◆ Exceeds all Insulation Requirements for British Columbia
- ◆ Built to meet or exceed Z-240 Standards

Authorized Retailer:

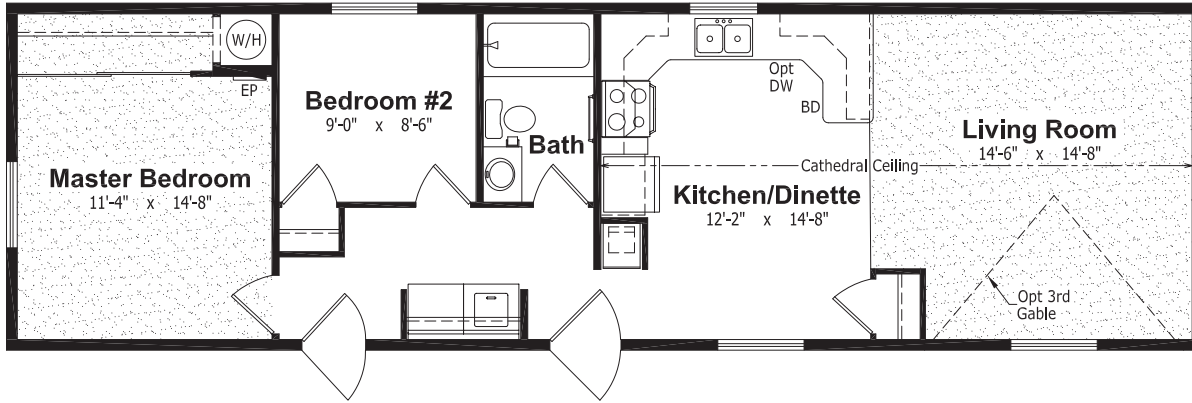


9500 Jim Bailey Road . Kelowna . BC . V4V 1S5

www.winfieldhomes.ca

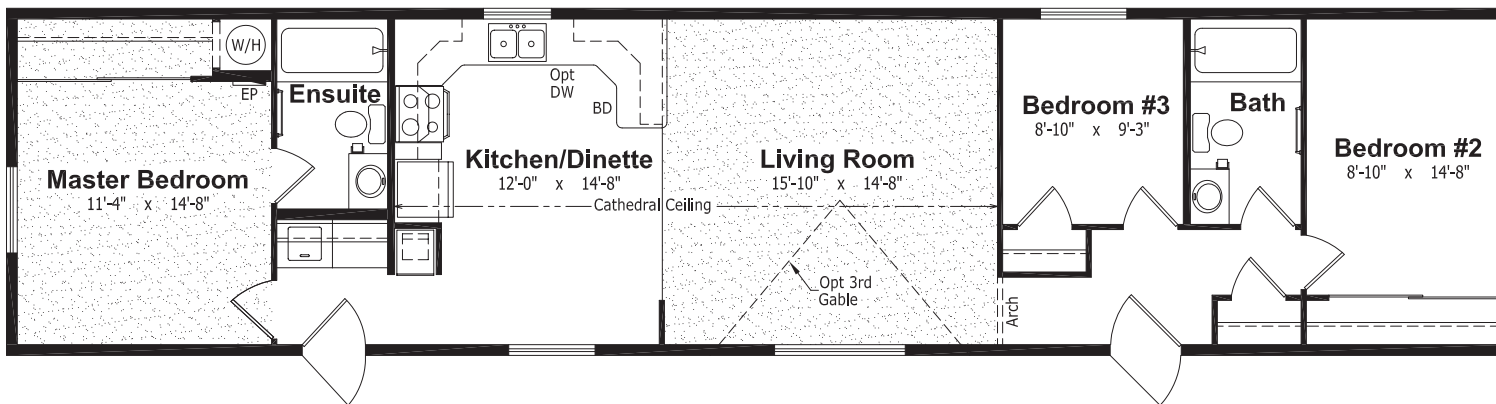
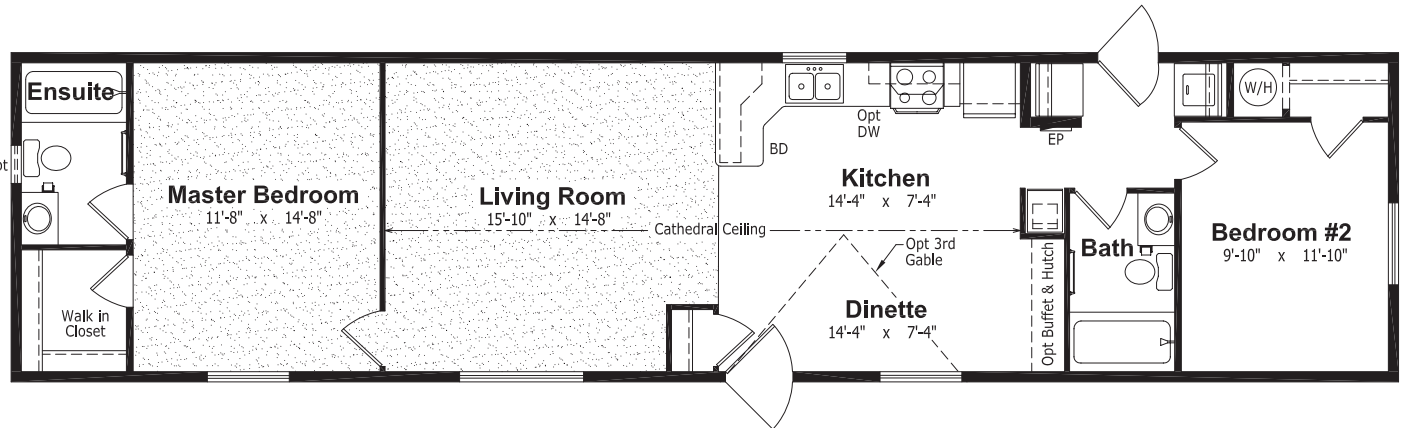


The Lake Country Series, 16' Wide Single Section Homes



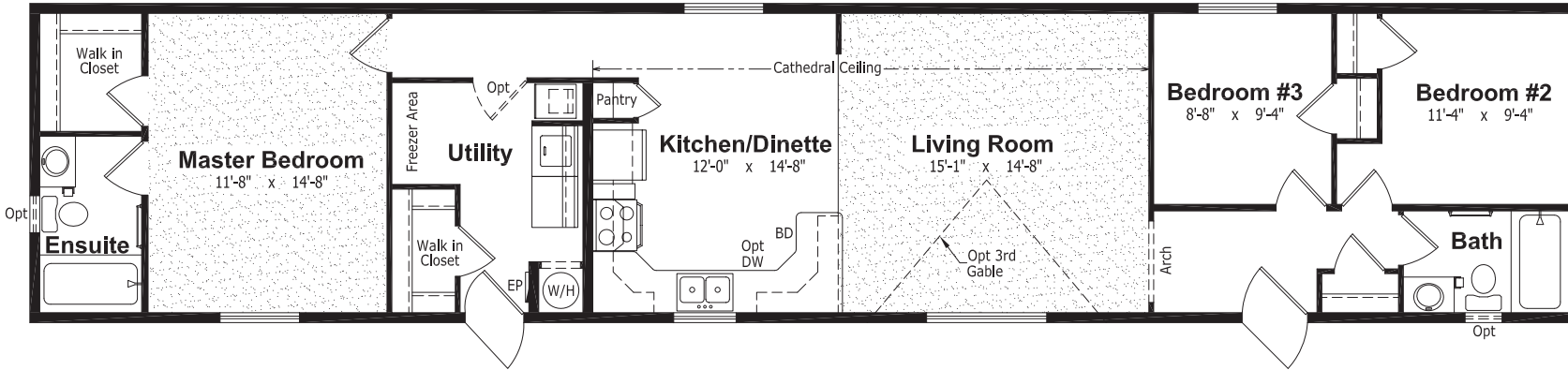
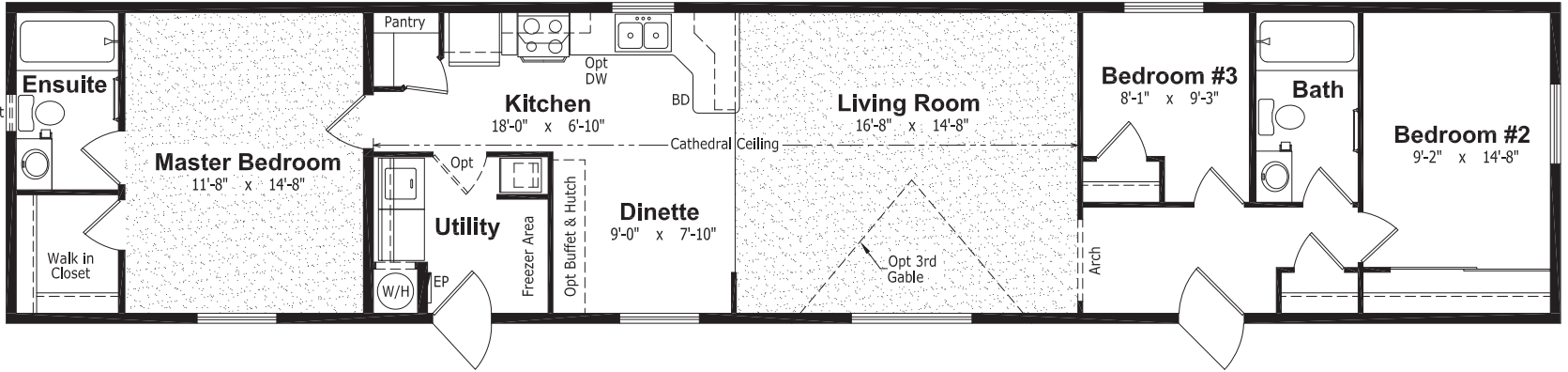
“The Fraser”
 LC-6540
 16' x 54', 864 sq. ft.

“The Coldstream”
 LC-6660
 16' x 66'
 1,056 sq. ft.



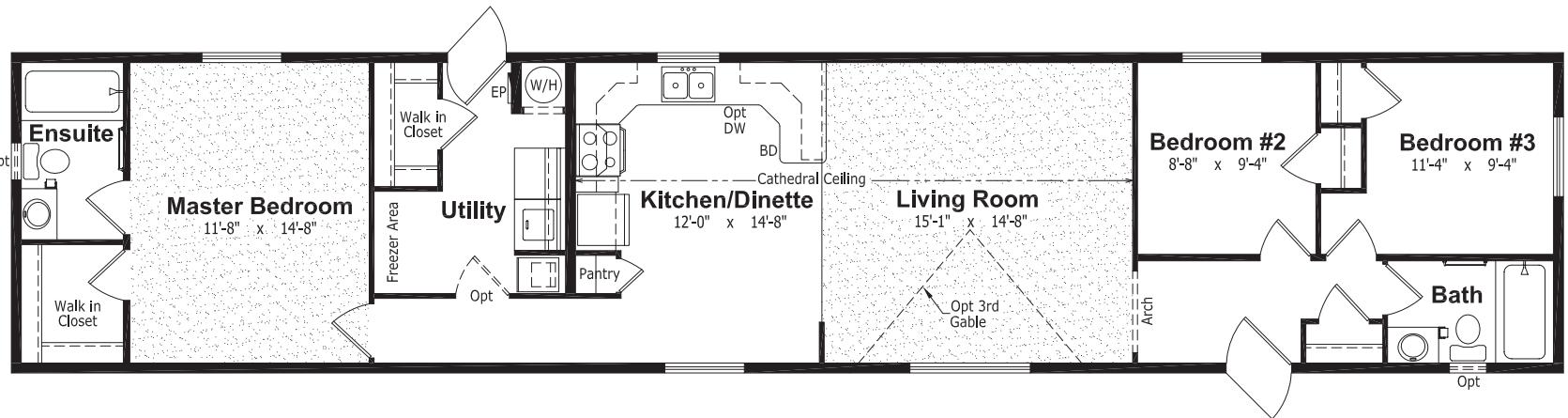
“The Skeena”
 LC-6680
 16' x 68'
 1,088 sq. ft.

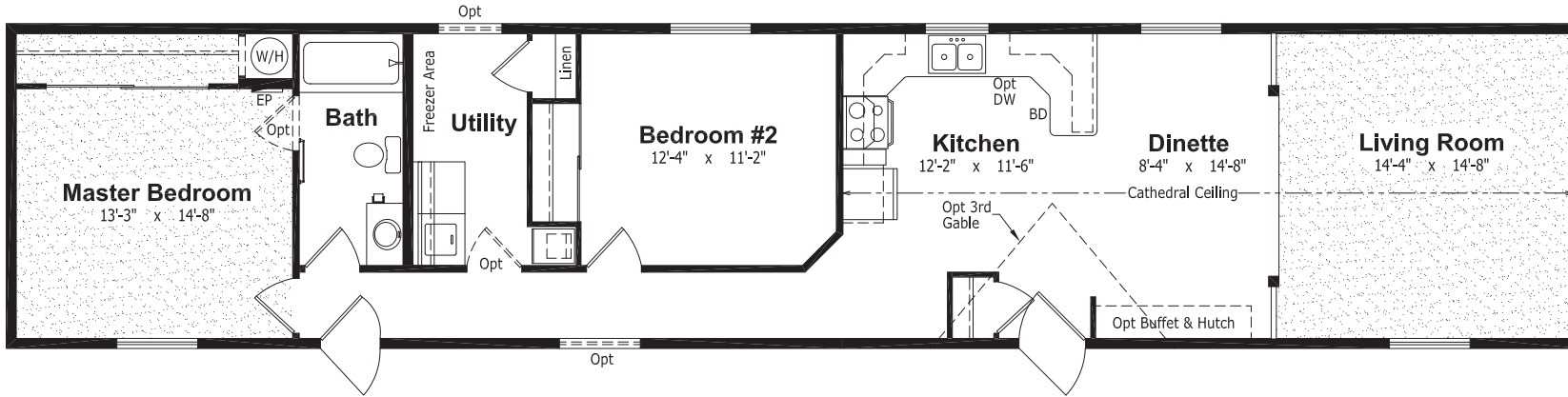
“The Bulkley”
 LC-6760
 16' x 76'
 1,216 sq. ft.



“The Omenica”
 LC-6761
 16' x 76'
 1,216 sq. ft.

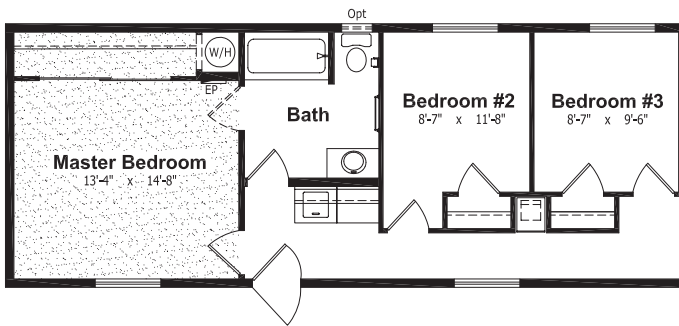
“The Seymour”
 LC-6762
 16' x 76'
 1,216 sq. ft.





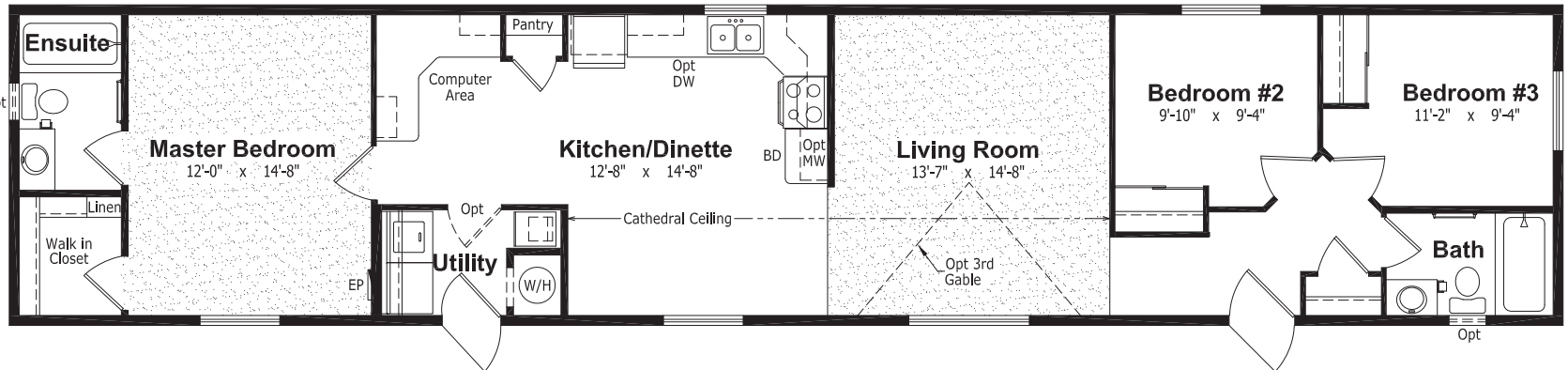
"The Thompson"

LC-6763
16' x 76'
1,216 sq. ft.

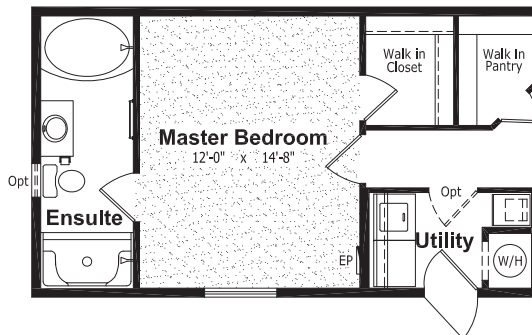


Optional Bedroom #3
(not to scale)

"The Chilcotin"
LC-6764
16' x 76'
1,216 sq. ft.



Alternate Ensuite
(not to scale)





Optional Features

Not all home sites and home buyers have the same needs or wants, so SRI offers decor options that reflect not only the current home decorating trends, but also your own personal taste.

Exterior

- Three Light Bay Windows
- Painted "Smart Start" Fascia, Window and Door Trim
- Third Gables
- Garden and Patio Doors
- Exterior Door with Half Round, 9 Lite, Athens or Cascade Insert
- Trapezoid and Octagon Windows
- Acrylic Block Windows
- Pewter, White or "Ladder" Grids in Windows
- Energy Efficient Low-E and Argon Windows
- Skylights
- Vinyl Shutters
- Painted Smart Start Shutters
- Turbine Vents
- Octagon Vents
- Electric Door Chimes
- Extra Exterior GFI

Interior

- Painted Drywall with Ceiling Cove Moulding
- Upgrade Legacy Lino
- Laminate Flooring
- Ceramic Tile Flooring
- Carpeting in 2nd and 3rd Bedrooms
- 2" Faux Wood Blinds
- Chair Rail
- French Doors
- Mirrored Closet Doors
- Utility Room Door with Grill
- Freezer Cabinets
- Soak Sink with Cabinet
- Ceiling Fan with Lights
- Recessed Fluorescent Lights
- Clermont White Raised Panel Passage Doors
- White Painted Moulding Package
- Lever Handles on All Doors

Kitchen

- Wood Cabinets
(chocolate pear or Candlelight)
- Island Work Centre
- Upgrade High Definition Counter Laminate
- Planning Centre

Kitchen (cont'd)

- Upgrade High Definition Bevelled Counter Edging
- Appliance Garage
- Lazy Susan
- Candlelight, Chocolate, Summer Flame or Natural Oak Reveal Counter Edging
- White or Black Sink
- Single Lever Wand Style Kitchen Faucet
- Built-In Dishwasher
- Combination Microwave/Range Hood
- Eye Level Oven and Cook Top or Self Cleaning Range
- Two Door Side by Side Refrigerator
(with water and ice maker)
- Black or Stainless Appliances
- Raised Dishwasher Cabinet with Drawer below
- Pullout Trash and Recycle bins

Bathroom

- Oval Tub or Corner Oval Tub
- Jetted Spa Option (available on any tub)
- 2 Person Jetted Tub
- 36", 48" or 60" Shower Stall
- Low Barrier Shower
- Handicap Toilet
- Tri-Mirror Medicine Cabinet
- Grab Bars
- Deluxe Tub Drapery
- Banjo Countertop on Vanity
- Vanity Top Medicine Cabinets

Utilities

- Gas Fireplace with Air Circulating Fan
- 40 Gallon U.S. Gas Water Heater
- Forced Air Electric Furnace
- Washer and Dryer
- Stacking Washer and Dryer
- Front Loading Washer and Dryer
- Central Vacuum System
- Roughed in for Central Vacuum
- 200 Amp Electrical Panel
- Extra Telephone / Cable Box(es)
- Pre-wire for Telephone and/or Cable